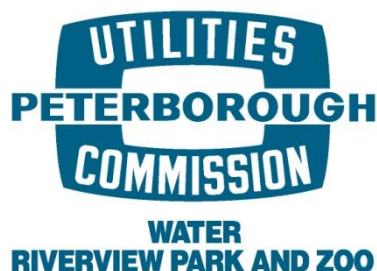

2014 Annual Report on Drinking Water Quality

January 1 – December 31, 2014

Peterborough Water Treatment System

Drinking Water System Number 220000497
Municipal Drinking Water Licence 145-101, Issue 1
Owner: Peterborough Utilities Commission
Operating Authority: Peterborough Utilities Services Inc.



Peterborough Utilities Commission is the owner of the Peterborough Municipal Water System. Peterborough Utilities Services Inc. is under contract with the owners to operate and maintains the System, as the Operating Authority. We are committed to providing safe drinking water to all our customers. This report has been prepared in accordance with Section 11 of Ontario Regulation 170/03 and as mandated by the Safe Drinking Water Act 2002. Free copies of this report are available on our website www.peterboroughutilities.ca Further information on the Drinking Water

Regulations can be found on the Ministry of the Environment website at www.ene.gov.on.ca.

Inside this Report

System Description	Page 2
Legislation	Page 3
Adverse Water Quality Reports	Page 4
Water Usage	Page 5
Water Quality	Page 6



2014 Water Quality Report

System Description

Raw Water

The source of raw (untreated) water for Peterborough's drinking water is the Otonabee River. The Otonabee River Water is of good quality and can be described as a moderately coloured water of low turbidity. The river water temperature ranges from 0°C (winter) to approximately 26°C (summer). The raw river water is what we call a surface water supply, which means that it is considered to be an unprotected source.

Accordingly, we assume that raw water always required full treatment at the Peterborough Water Treatment Plant to make it drinkable or potable.

The river water quality is monitored by staff at the plant as well as the Otonabee Region Conservation Authority (ORCA) and the Peterborough Health Unit (beaches only). The watershed is protected by planning and approvals processes through the City of Peterborough and ORCA. Since 1998, ORCA has monitored water quality in the Otonabee watershed under the Watershed 2000 Program and the Provincial Water Quality Monitoring Network.

Water Treatment Plant

The plant is located at 1230 Water Street North, Peterborough, adjacent the Riverview Park & Zoo. The plant was initially built in 1922 and expanded in 1952, 1965 and 1995. The conventional treatment process includes coagulation, flocculation, sedimentation, filtration and chlorine disinfection and a process waste treatment facility.

Aluminum sulphate (alum) is used as the primary coagulant. The current rated capacity of the plant is 104 ML/day.

Water Storage Tanks and Reservoirs

Treated water is stored at various locations throughout the City in underground reservoirs and elevated storage tanks. Storage is used to supplement supply during times of high water demand and in emergency situations such as firefighting. The water storage capacity in the system is 48.2 ML.

Water Pumping Stations

There are three individual pressure zones in Peterborough. Water supply is pumped from the plant or from the Water Street Pumping Station. Approximately one half of the City's water supply is pumped using water-driven turbine pumps powered by the Otonabee River flow. There are four water booster pumping stations around the city, which pump water from lower pressure zones to higher pressure zones. Two of the most critical stations have diesel-powered backup in case of an electrical power outage.

Water Distribution Piping Systems

The water distribution system consists of approximately 419 kilometers of pipe (water mains), 2,256 hydrants and 27,434 individual water services. Hydrants are colour-coded according to the Ontario Fire Code requirements to indicate the available flow rate at a 20 p.s.i. residual pressure.



2014 Water Quality Report

The following chemicals were used in the drinking water treatment process:

- ◆ Chlorine
- ◆ Alum (Aluminum Sulphate)
- ◆ BW46M (Sodium Silicate)
- ◆ Hydrofluosilicic Acid
- ◆ N Silicate (Sodium Silicate)

Legislation

Since the issuance of the Walkerton Reports I and II in 2002, many legislative and regulatory changes have occurred for those supplying drinking water in Ontario. The following are the primary pieces of legislation that have directly affected the operation of the City of Peterborough's municipal water system.

Safe Drinking Water Act

As recommended by Commissioner O'Connor in the Walkerton Inquiry Report Part 2, the government passed the Safe Drinking Water Act in 2002, which expands on existing policy and practice and introduced new features to protect drinking water in Ontario. The Act's purpose is to protect human health through the control and regulation of drinking-water systems and drinking-water testing. The Act also provides legislative authority to implement the recommendations made in Commissioner O'Connor's Walkerton Part One and Two Reports. As of August 2007, all 28 recommendations made in Part One, and all 93 in Part Two have been implemented. The Act also has the benefit of gathering in one place all legislation and regulations relating to the treatment and distribution of drinking water. Parts of the Act address:

- ◆ Accreditation of operating authorities
- ◆ Municipal drinking water systems
- ◆ Drinking water testing
- ◆ Inspections
- ◆ Compliance and Enforcement

Drinking Water Quality Management Standard (DWQMS)

On October 30, 2006, the finalized standard was issued on the Environmental Bill of Rights Registry. The purpose of this Standard is to assist owners and operating authorities in the effective management and operation of their municipal residential drinking water systems. This Standard outlines requirements for a Quality Management System (QMS) to ensure high quality drinking water. In the development of a QMS, the Operating Authority must create an Operational Plan; this document will define the QMS and will be subject to external audits for accreditation. Staff developed and implemented a QMS specific to the Peterborough municipal water system. That received full scope accreditation in June 2011.



2014 Water Quality Report

Ontario Regulation 435/07: Financial Plans

In 2007, MOE developed the Financial Plans Regulation (O. Reg. 453/07) under the SDWA that prescribes the requirements for Financial Plans. The Financial Plans Regulation requires all owners of municipal residential drinking water systems to prepare Financial Plans that detail the system's financial information projected forward for at least six years. The Financial Plans must include income statements (which set

out revenues and expenses), as well as balance sheets (which include financial assets, non-financial assets, total liabilities, cash flow, etc.). The Financial Plans must then be formally approved by the owner of the municipal system through a resolution of the municipal council. The Financial Plan requires regular updates before every license renewal application (every 5 years) the Financial Plan was then submitted to the Ministry of the Environment prior to the July 2010 deadline.

Adverse Water Quality Results

There were three incidents of adverse drinking water quality in 2014. All incidences were reported to the MOE and appropriate corrective action was taken. Details and corrective action are described below;

All three of the adverse results were the presence of total coliform in the distribution samples. These samples were taken on June 17 from

Lansdowne, Royal and Bellevue Sampling Stations, On September 2 from Sherbrooke and Ravenwood Sampling Station and the third was on October 21 at the Scollard pumping station. For each occurrence the distribution system was tested at the sample location, above and below the location. The adverse results were not confirmed by the re-sampling and re-testing.

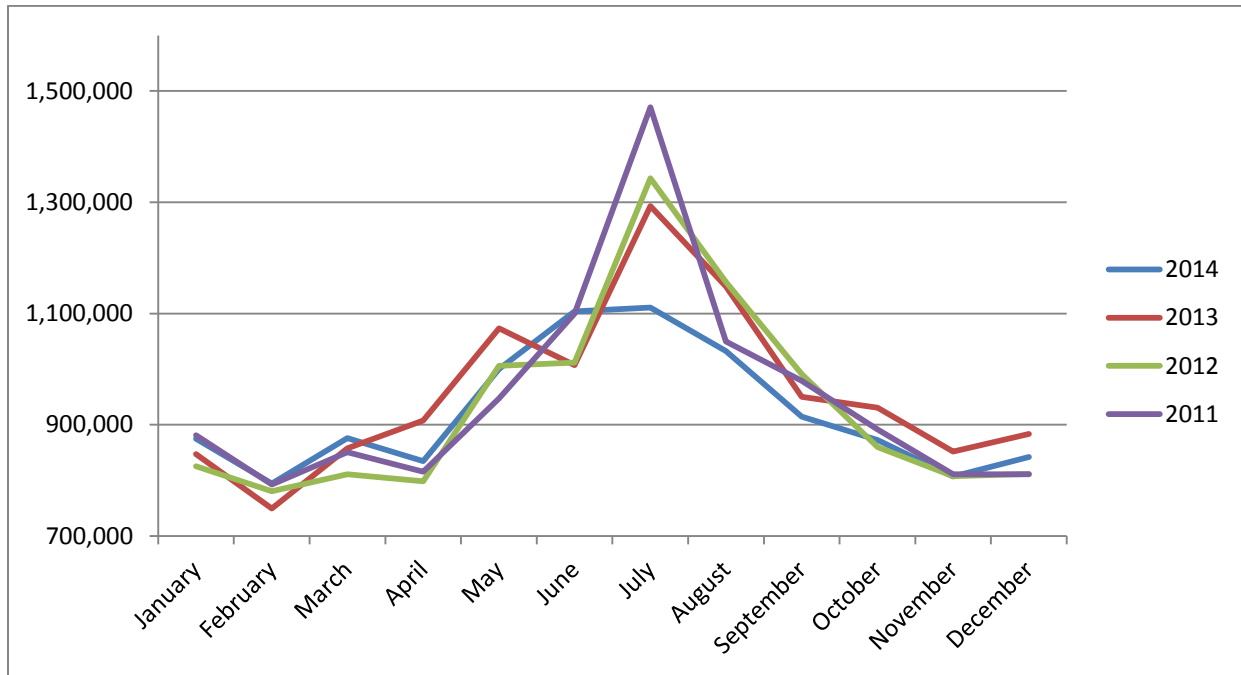


2014 Water Quality Report

Water Usage

From January 1 to December 31, 2014, the Peterborough Water Treatment Plant produced a total of 11,063,021 cubic metres of water. This compares to 11,499,321 cubic metres from the previous year (a decrease of 3.94%).

2013 Monthly Water Consumption





2014 Water Quality Report

Water Quality

Microbiological Parameters Sampling Summary – Schedule 10, O Reg. 170/03

	Number of Samples	Range of E.Coli Results	Range of Total Coliform Results	Number of HPC Samples	Range of HPC Results
Raw	248	0 - 120	13 - 670	247	9 - 965
Treated	246	0 - 0	0 - 0	248	0 - 4
Distribution	1242	0 - 0	0 - 11*	1230	0 - 55

* see adverse result description on page 4.

Operational Sampling Summary - Schedule 7, O Reg. 170/03

	Number of Grab Samples	Range of Results	Unit of Measure	Number of Exceedances
Turbidity	11 x 8,760	0.02 – 1.99	NTU	0
Chlorine	8,760	1.08 – 2.25	mg/L	0
Fluoride	364	0.01 – 0.75 LIMS	mg/L	0

Additional Sampling

Date of legal instrument issued	Parameter	Date Sampled	Result	Unit of Measure
Aug 16, 2006	Suspended Solids waste process	Jan 17	3.75	mg/L
		Apr 19	1.90	
		Jul 12	3.18	
		Oct 18	5.44	

Inorganic Sampling Summary – Schedule 23, O Reg. 170/03

Parameter	Sample Date	Result Value	Unit of Measure	Number of Exceedances
Antimony	Jan 09	0.03	µg/L	0
Arsenic	Jan 09	0.4	µg/L	0
Barium	Jan 09	27.2	µg/L	0
Boron	Jan09	8.0	µg/L	0
Cadmium	Jan 09	0.018	µg/L	0
Chromium	Jan 09	0.5 <MDL	µg/L	0
*Lead	Jan 09	0.0015	µg/L	0
Mercury	Jan 09	0.01 <MDL	µg/L	0
Selenium	Jan 09	1 <MDL	µg/L	0
Sodium	Jan 09	9.03	mg/L	0
Uranium	Jan 09	0.020	µg/L	0
Fluoride	Annual Average	0.46	mg/L	0



2014 Water Quality Report

Parameter	Sample Date	Result Value	Unit of Measure	Number of Exceedances
Nitrite	Jan 14	0.05	mg/L	0
	Apr 02	0.05		
	Jul 09	0.05		
	Oct 08	0.05		
Nitrate	Jan 14	0.16	mg/L	0
	Apr 02	0.27		
	Jul 09	0.05		
	Oct 08	0.06		

Organic Sampling Summary - Schedule 24, o Reg. 170/03

Parameter	Sample Date	Result Value	Unit of Measure	Number of Exceedances
Alachlor	Jan 09	0.02<MDL	µg/L	0
Aldicarb	Jan 09	0.01<MDL	µg/L	0
Aldrin + Dieldrin	Jan 09	0.01<MDL	µg/L	0
Atrazine + N-dealkylated metabolites	Jan 09	0.01<MDL	µg/L	0
Azinphos-methyl	Jan 09	0.02<MDL	µg/L	0
Bendiocarb	Jan 09	0.01<MDL	µg/L	0
Benzene	Jan 09	0.32<MDL	µg/L	0
Benzo(a)pyrene	Jan 09	0.004<MDL	µg/L	0
Bromoxynil	Jan 09	0.33<MDL	µg/L	0
Carbaryl	Jan 09	0.01<MDL	µg/L	0
Carbofuran	Jan 09	0.01<MDL	µg/L	0
Carbon Tetrachloride	Jan 09	0.16<MDL	µg/L	0
Chlordane (Total)	Jan 09	0.01<MDL	µg/L	0
Chlorpyrifos	Jan 09	0.02<MDL	µg/L	0
Cyanazine	Jan 09	0.03<MDL	µg/L	0
Diazinon	Jan 09	0.02<MDL	µg/L	0
Dicamba	Jan 09	0.20<MDL	µg/L	0
1,2-Dichlorobenzene	Jan 09	0.41<MDL	µg/L	0
1,4-Dichlorobenzene	Jan 09	0.36<MDL	µg/L	0
Dichlorodiphenyltrichloroethane (DDT) + metabolites	Jan 09	0.01<MDL	µg/L	0
1,2-Dichloroethane	Jan 09	0.35<MDL	µg/L	0
1,1-Dichloroethylene (vinylidene chloride)	Jan 09	0.33<MDL	µg/L	0
Dichloromethane	Jan 09	0.35<MDL	µg/L	0
2-4 Dichlorophenol	Jan 09	0.15<MDL	µg/L	0
2,4-Dichlorophenoxy acetic acid (2,4-D)	Jan 09	0.19<MDL	µg/L	0
Diclofop-methyl	Jan 09	0.40<MDL	µg/L	0
Dimethoate	Jan 09	0.03<MDL	µg/L	0
Dinoseb	Jan 09	0.36<MDL	µg/L	0
Diquat	Jan 09	1<MDL	µg/L	0
Diuron	Jan 09	0.03<MDL	µg/L	0



2014 Water Quality Report

Parameter	Sample Date	Result Value	Unit of Measure	Number of Exceedances
Glyphosate	Jan 09	1<MDL	µg/L	0
Heptachlor + Heptachlor Epoxide	Jan 09	0.01<MDL	µg/L	0
Lindane (Total)	Jan 09	0.01<MDL	µg/L	0
Malathion	Jan 09	0.02<MDL	µg/L	0
Methoxychlor	Jan 09	0.01<MDL	µg/L	0
Metolachlor	Jan 09	0.01<MDL	µg/L	0
Metribuzin	Jan 09	0.02<MDL	µg/L	0
Monochlorobenzene	Jan 09	0.3<MDL	µg/L	0
Paraquat	Jan 09	1<MDL	µg/L	0
Parathion	Jan 09	0.02<MDL	µg/L	0
Pentachlorophenol	Jan 09	0.15<MDL	µg/L	0
Phorate	Jan 09	0.01<MDL	µg/L	0
Picloram	Jan 09	1<MDL	µg/L	0
Polychlorinated Biphenyls(PCB)	Jan 09	0.04<MDL	µg/L	0
Prometryne	Jan 09	0.03<MDL	µg/L	0
Simazine	Jan 09	0.01<MDL	µg/L	0
THM (NOTE: show latest annual average)	Jan 14 Apr 02 Jul 09 Oct23	73.25	µg/L	0
Temephos	Jan 09	0.01<MDL	µg/L	0
Terbufos	Jan 09	0.01<MDL	µg/L	0
Tetrachloroethylene	Jan 09	0.35<MDL	µg/L	0
2,3,4,6-Tetrachlorophenol	Jan 09	0.14<MDL	µg/L	0
2,4,6-Trichlorophenol	Jan 09	0.25<MDL	µg/L	0
2,4,5-Trichlorophenoxy acetic acid (2,4,5-T)	Jan 09	0.22<MDL	µg/L	0
Trifluralin	Jan 09	0.02<MDL	µg/L	0
Vinyl Chloride	Jan 09	0.17<MDL	µg/L	0

Lead Sampling Summary – Schedule 15.1, O Reg. 170/03

*The Peterborough Municipal Water Treatment System was granted relief from regulatory lead sampling in Schedule 15.1 of O. Reg. 170/03, as described in Certificate of Approval PB220000497RR-01, dated March, 22 2011.

Location Type	Number of Samples	Range of Lead Results	Unit of Measure	Number of Exceedances
Plumbing	1	<0.015	mg/L	0
Distribution	1	<0.015	mg/L	0



2014 Water Quality Report

Questions or comments

Please contact us either by mail, phone or email.

Peterborough Utilities Services Inc.

1867 Ashburnham Drive, Peterborough, ON K9L 1P8

705-748-9300 ext 1258

Patricia Skopelianos, Water Quality Coordinator

pskopelianos@peterboroughutilities.ca