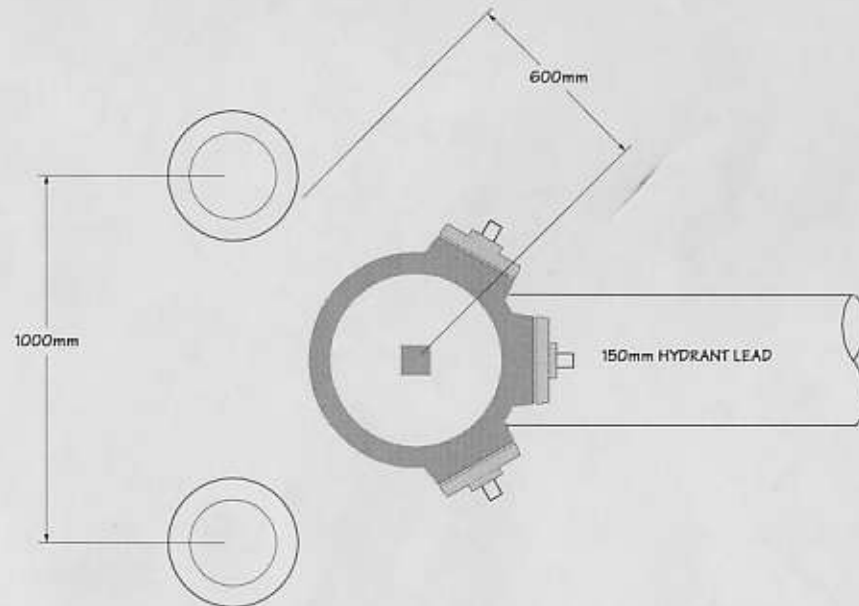


Typical Bollard Installation / Hydrant

SIDE VIEW Not to Scale



Typical Bollard Installation / Hydrant

TOP VIEW Not to Scale

Installation Notes

- 1) Bollard to be 150mm diameter standard weight yellow seamless structural grade steel pipe filled with 20mpa concrete.
- 2) Top of Bollard to be installed flush with underside of hydrant bonnet.
- 3) All measurements are in millimeters unless otherwise noted.

PETERBOROUGH UTILITIES SERVICES INCORPORATED

TITLE TYPICAL BOLLARD INSTALLATION - HYDRANT		SCALE NTS	REVISIONS	Date
DRAWN BY <i>Scott Seabrook</i>		JOB COST		
DESIGNED <i>[Signature]</i>		DRAWING No. A2599		
APPROVED <i>[Signature]</i>		CADD		
DATE JUNE 18 2003				