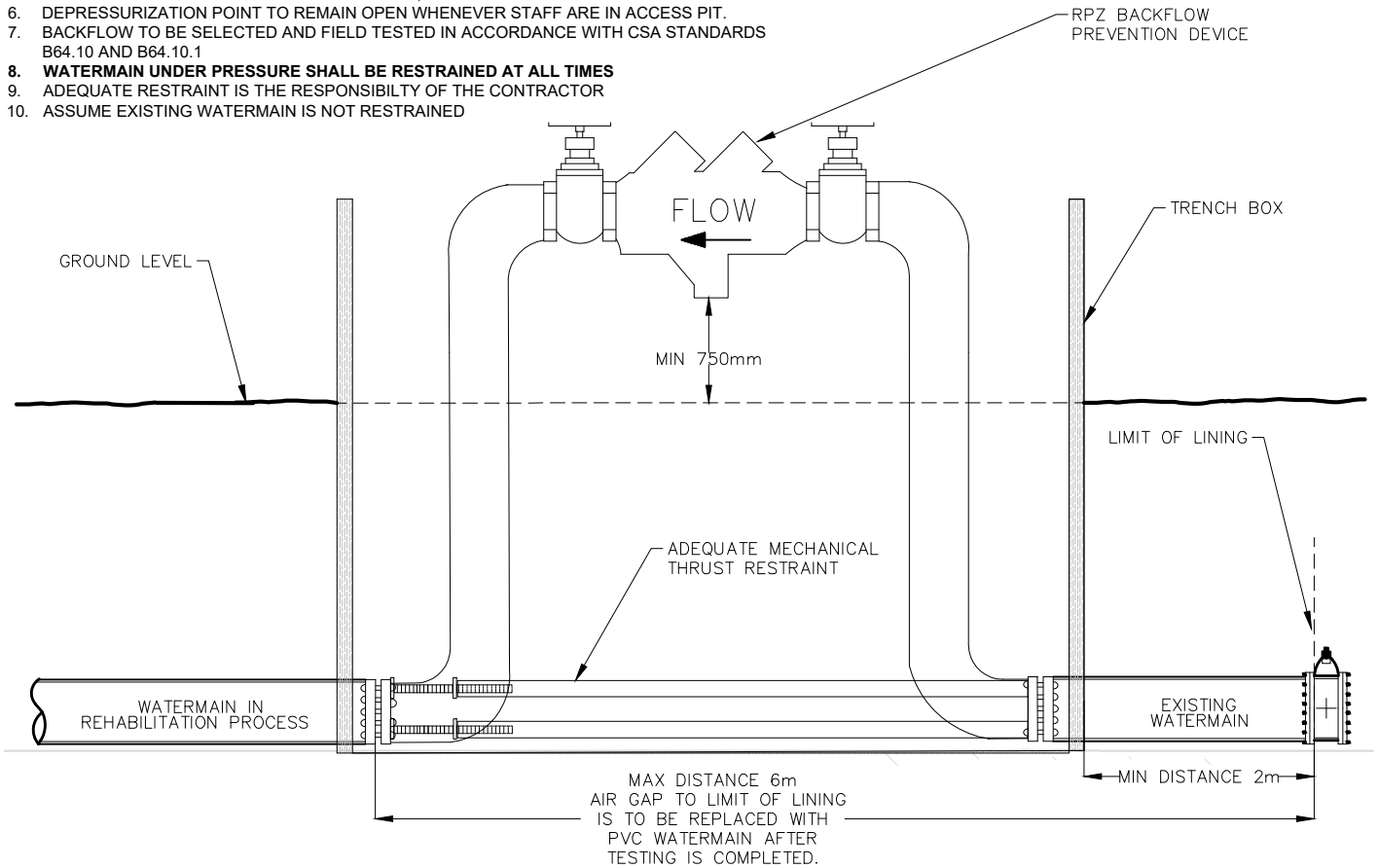


## NOTES

1. PHYSICAL SEPARATION MUST BE MAINTAINED AT ALL CONNECTION POINTS OF NEW OR REHABILITATED WATERMAINS TO THE ACTIVE DRINKING WATER SYSTEMS UNTIL BACTERIOLOGICAL TESTS HAVE PASSED. SAMPLING LOCATIONS SHALL BE PROVIDED AS PER PUC CONSTRUCTION SPECIFICATIONS SECTION 3.0
2. PHYSICAL SEPARATION, PERIMETER ACCESS PITS ARE TO BE LOCATED A MINIMUM OF 2M FROM THE PERIMETER VALVE. CONTRACTOR TO ASSESS SOIL MAKE-UP PRIOR TO LOCATING ACCESS PIT.
3. CONNECTION OF THE WATERMAIN TO BE COMPLETED AS PER PUC CONSTRUCTION SPECIFICATIONS SECTION 2.4.19. ONLY AFTER RECEIPT OF AUTHORIZATION BY THE PUC ENGINEER.
4. CONTRACTOR IS RESPONSIBLE FOR INSTALLATION AND MAINTENANCE OF APPROVED MECHANICAL THRUST BLOCK(S) THROUGHOUT CONSTRUCTION. USE OF WOODEN BLOCKING FOR RESTRAINTS IS NOT PERMITTED.
5. SUITABLE 50mm OUTLET FOR FLUSHING TO BE INSTALLED AT EACH STUB OR DEAD END. HOSE AND FITTINGS FOR SAMPLES POINTS AND APPROPRIATE DISCHARGE OF FLUSHING WATER TO BE PROVIDED BY CONTRACTOR AT ALL STUBS, SAMPLE LOCATIONS.
6. DEPRESSURIZATION POINT TO REMAIN OPEN WHENEVER STAFF ARE IN ACCESS PIT.
7. BACKFLOW TO BE SELECTED AND FIELD TESTED IN ACCORDANCE WITH CSA STANDARDS B64.10 AND B64.10.1
8. **WATERMAIN UNDER PRESSURE SHALL BE RESTRAINED AT ALL TIMES**
9. ADEQUATE RESTRAINT IS THE RESPONSIBILITY OF THE CONTRACTOR
10. ASSUME EXISTING WATERMAIN IS NOT RESTRAINED

N.T.S.

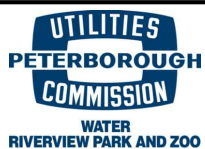


## WATERMAIN COMPLETION ASSEMBLY



# PETERBOROUGH UTILITIES COMMISSION

## STANDARD WATERWORKS DRAWING



TITLE REHABILITATED WATERMAINS  
PHYSICAL SEPARATION  
CLEANING WATER SOURCE PROTECTION  
(MAINS LESS THAN OR EQUAL TO 300mm)

No.	REVISION	DATE
1.	REQUIRE MECHANICAL RESTRAINTS, REVISED NOTE 4. ADDED NOTE 8-10.	2025-01-15
2.		

DRAWN BY: J. ELLISON

APPROVED: K. CONLIN

DESIGNED: J. ELLISON

DATE: 10-27-2023

A3119