

METRIC

Dimensions are in Metres unless otherwise shown

PETERBOROUGH UTILITIES SERVICES INC.
1867 Ashburnham Drive
Peterborough, Ontario K9J 6Z5

FAX 748-0120
PHONE (705) 748-9301

No.	REVISIONS	Date	App.
1	REVISE NOTES / ADD 100mm DRAIN	31 AUG. 2005	

LEGEND

PETERBOROUGH UTILITIES SERVICES INCORPORATED

TITLE

AIR RELEASE VALVE ARRANGEMENT
IN PRECAST 2400mm X 1800mm RECTANGULAR CHAMBER

DRAWN BY *Scott Seabrook*

SCALE NTS

DESIGNED

JOB COST

APPROVED *[Signature]*

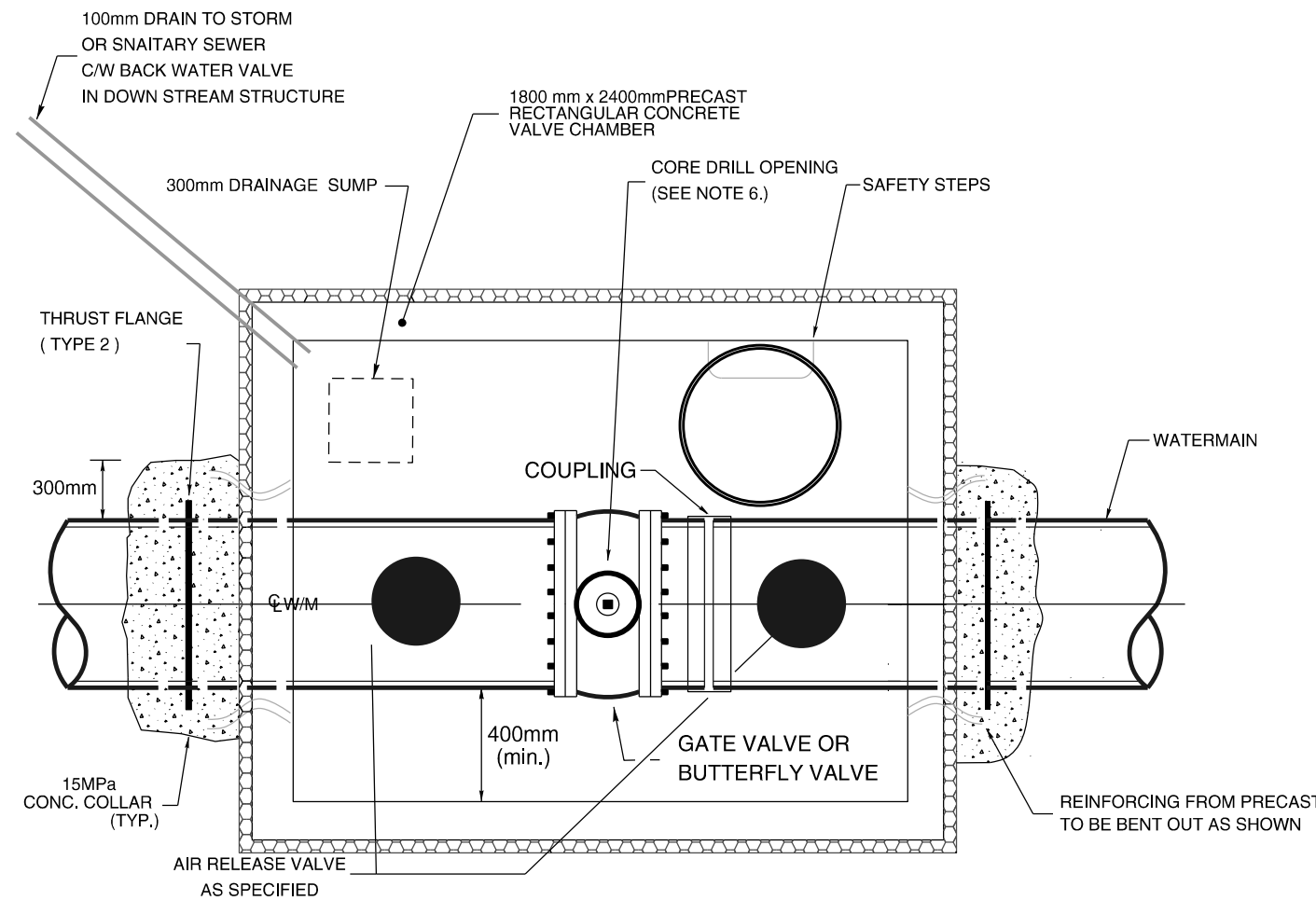
DRAWING No.

DATE 31 AUG. 2005

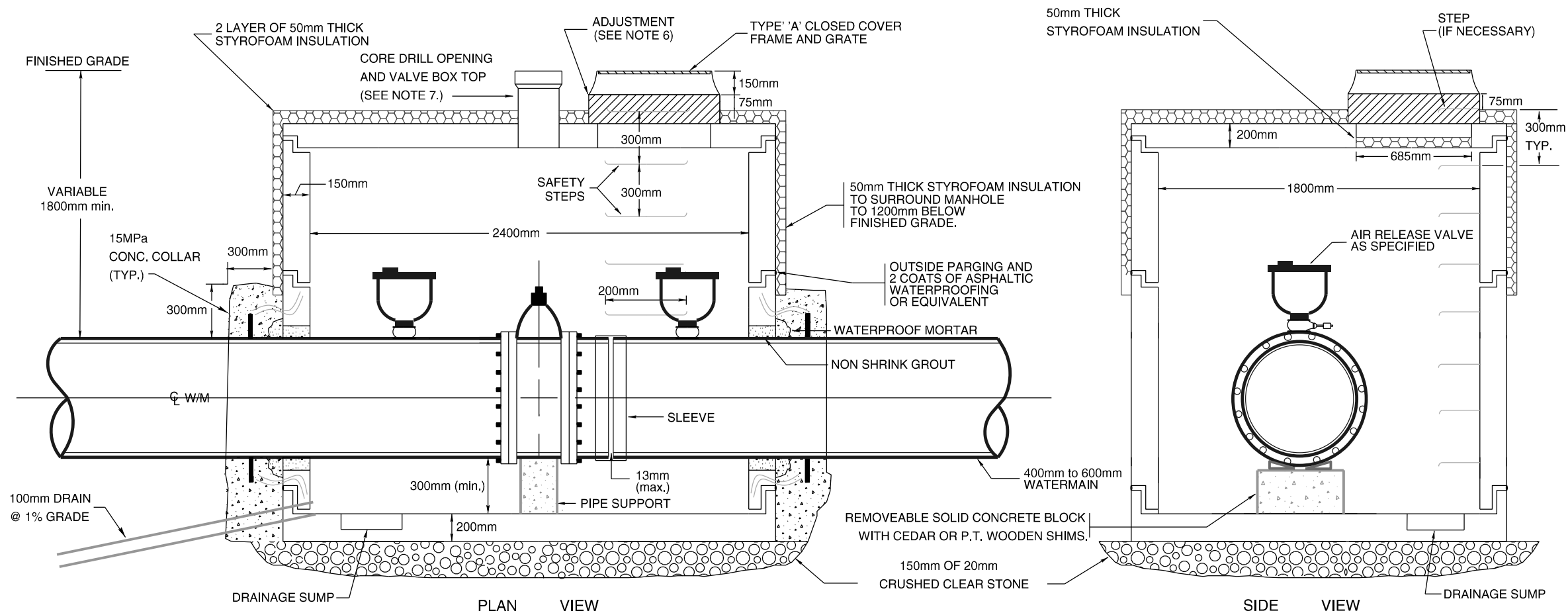
CADD B1936

NOTES:

1. VALVE CHAMBER TO MEET A.S.T.M. SPECIFICATION C-478, CSA A23.4-94 (OR LATEST REVISIONS)
2. FRAME TO BE ANCHORED WITH CEMENT MORTAR.
3. ALL JOINTS TO BE MADE WATERTIGHT WITH OUTSIDE PARGING AND ASPHALT WATERPROOFING
4. ALL CONCRETE SURFACES BELOW GRADE TO BE COATED WITH 2 COATS OF ASPHALT WATER PROOFING OR EQUIVALENT.
5. PRECAST JOINTS SHALL BE SEALED WITH A RUBBER GASKET, OR BUTYL MASTIC SEALANT
6. A MINIMUM OF 1 ROW AND A MAXIMUM OF 400mm OF ADJUSTMENT UNITS, MANHOLE TYPE, SHALL BE USED IN ADJUSTING MANHOLE TO GRADE. AN EXTRA ALUMINUM MANHOLE SAFETY STEP, CAST INTO ADJUSTMENT UNIT, SHALL BE USED WHERE MORE THAN 300MM OF ADJUSTMENT UNITS ARE USED.
7. CORE DRILL OPENING IN CAP TO ACCOMODATE VALVE BOX TOP SECTION OVER OPERATING NUT OF NEW VALVE.
8. WHERE GROUNDWATER LEVEL IS EXPECTED TO BE HIGH A TYPE "K" COPPER EXTENSION SHALL BE INSTALLED TO THE UNDERSIDE OF THE CHAMBER TOP WITH A GOOSENECK SUPPORTED FROM THE TOP
9. HIGH DENSITY EXTRUDED POLYSTYRENE (H.I.35) FOAM SHALL BE USED



TOP VIEW



PLAN VIEW

SIDE VIEW