

METRIC

Dimensions are in Metres unless otherwise shown

PETERBOROUGH UTILITIES SERVICES INC.
1867 Ashburnham Drive
Peterborough, Ontario K9J 6Z5

FAX 748-0120
PHONE (705) 748-9301

No.	REVISIONS	Date	App.

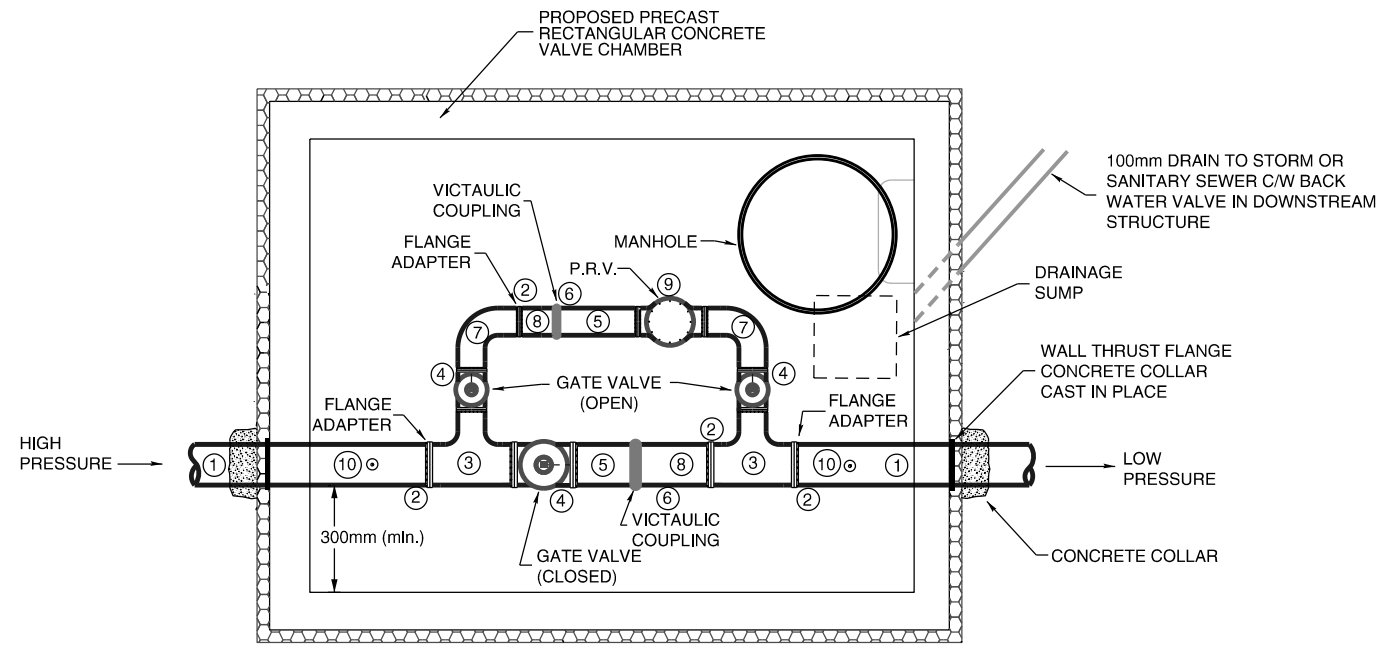
LEGEND

PETERBOROUGH UTILITIES SERVICES INCORPORATED

TITLE

TYPICAL PRESSURE REDUCING VALVE INSTALLATION

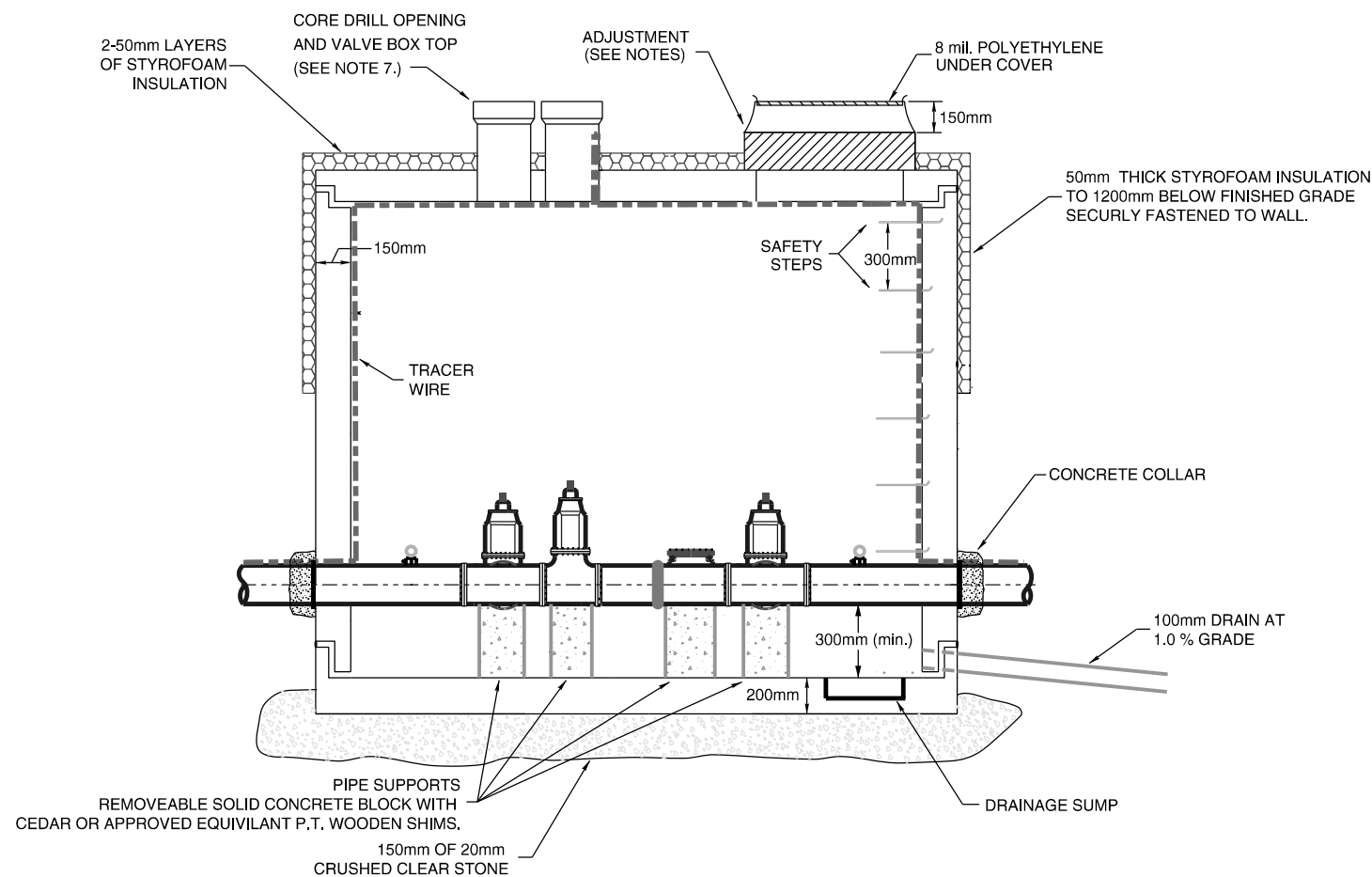
DRAWN BY <i>Steve Bilinger</i>	SCALE NOT TO SCALE
DESIGNED	JOB COST
APPROVED <i>[Signature]</i>	DRAWING No.
DATE 15 MARCH 2004	CADD B1969



- ① P.V.C. OR D.I.C. PIPE (PLAIN ENDS)
- ② FLANGE ADAPTER
- ③ TEE (FLANGED)
- ④ GATE VALVE (FLANGED)
- ⑤ D.I. SPACER (FLANGED END x VICTAULIC END, LENGTH 250mm)
- ⑥ VICTAULIC COUPLING - STYLE 31
- ⑦ 90 DEGREE ELBOW (FLANGED)
- ⑧ D.I. SPACER (PLAIN END x VICTAULIC END) - CUT TO SUIT (LENGTH 600mm)
- ⑨ PRESSURE REDUCING VALVE (FLANGED)
- ⑩ 20mm MAINSTOP (A.W.W.A. x F.I.P.) COMPLETE WITH PRESSURE GAUGE

GENERAL NOTES:

- VALVE CHAMBER TO MEET A.S.T.M. SPECIFICATION C-478, CSA A23.4-94 (OR LATEST REVISIONS)
- FRAME TO BE ANCHORED WITH CEMENT MORTAR.
- ALL JOINTS TO BE MADE WATERTIGHT WITH OUTSIDE PARGING AND ASPHALT WATERPROOFING
- ALL CONCRETE SURFACES BELOW GRADE TO BE COATED WITH TWO COATS OF ASPHALT WATERPROOFING OR EQUIVALENT
- PRECAST JOINTS SHALL BE SEALED WITH A RUBBER GASKET. OR BUTYL MASTIC SEALANT
- A MINIMUM OF 1 ROW AND A MAXIMUM OF 400mm OF ADJUSTMENT UNITS, MANHOLE TYPE, SHALL BE USED IN ADJUSTING MANHOLE TO GRADE. AN EXTRA ALUMINUM MANHOLE SAFETY STEP, CAST INTO ADJUSTMENT UNIT, SHALL BE USED WHERE MORE THAN 300MM OF ADJUSTMENT UNITS ARE USED.
- CORE DRILL OPENING IN CAP TO ACCOMODATE VALVE BOX TOP SECTION OVER OPERATING NUT OF NEW VALVE.
- REFER TO WATERWORKS MATERIAL SPECIFICATIONS
- HIGH DENSITY, EXTRUDED POLYSTYRENE FOAM, HI35 OR APPROVED EQUIVALENT, SHALL BE USED. ALL INSULATING MATERIAL MUST BE INSTALLED TO MANUFACTURER'S SPECIFICATIONS. UNLESS OTHERWISE APPROVED BY THE ENGINEER, INSULATION SHALL BE A MINIMUM OF 50mm THICK.



ALT.	VALVE SIZE	CHAMBER SIZE
1	150mm	2400mm x 1800mm
2	200mm - 300mm	3000mm x 1800mm
3	LARGER THAN 300mm	CAST IN PLACE