

METRIC

Dimensions are in Metres
unless otherwise shown

PETERBOROUGH UTILITIES SERVICES INC.
1867 Ashburnham Drive
Peterborough, Ontario K9J 6Z5

FAX 748-0120
PHONE (705) 748-9301

No.	REVISIONS	Date	App.

LEGEND

PETERBOROUGH UTILITIES SERVICES INCORPORATED

TITLE

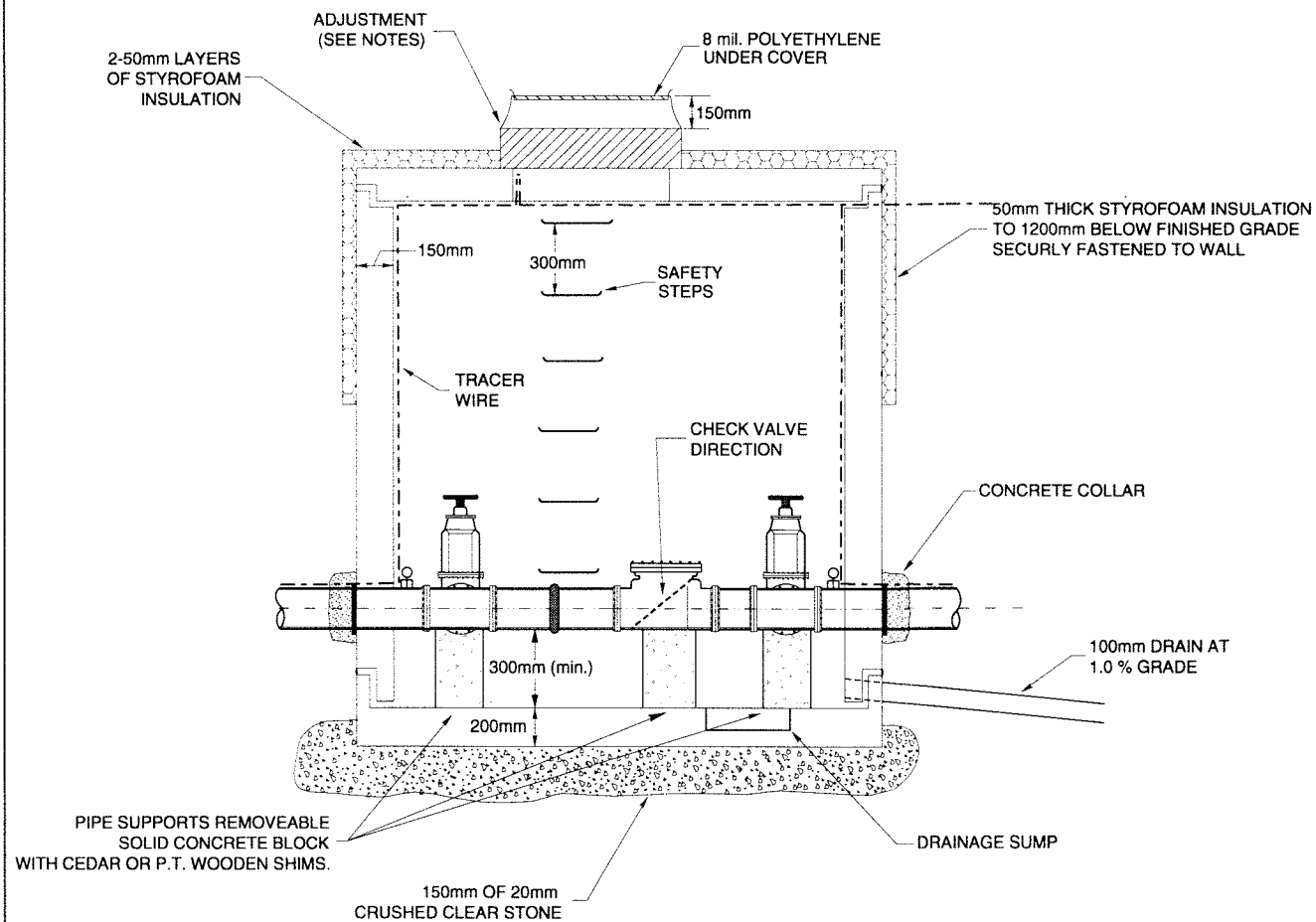
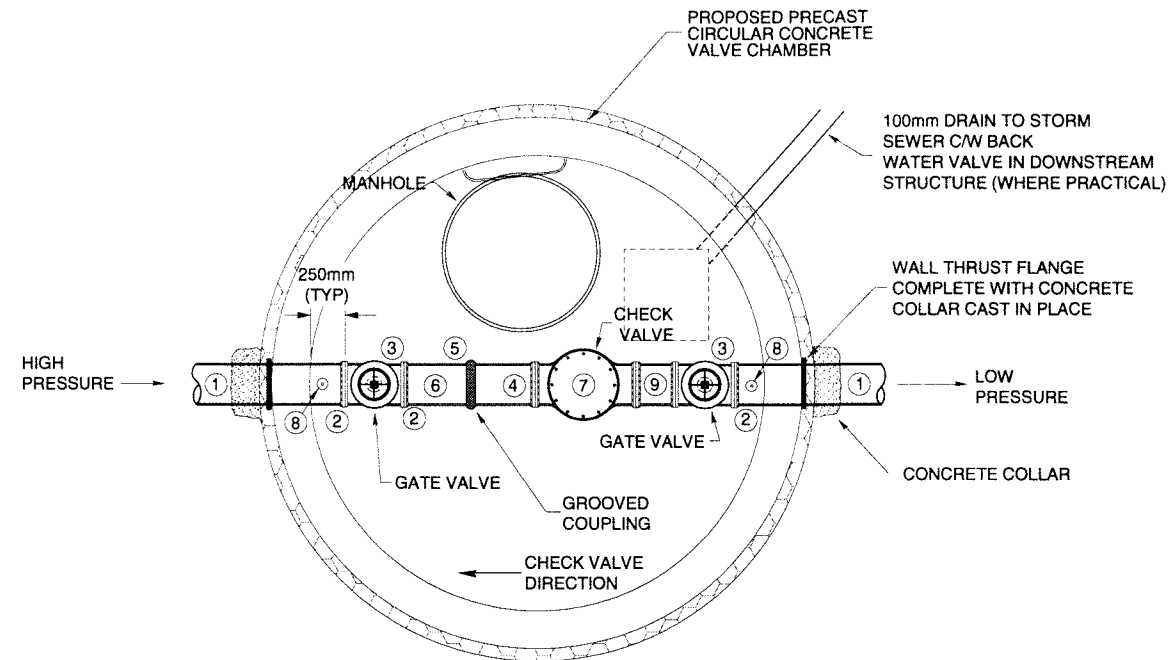
TYPICAL INSTALLATION FOR CHECK VALVE
AT PRESSURE ZONE BOUNDARY

DRAWN BY	<i>Steve Billings</i>	SCALE	NOT TO SCALE
DESIGNED	<i>[Signature]</i>	JOB COST	
APPROVED	<i>[Signature]</i>	DRAWING No.	
DATE	10/12/2007	CADD	B2129

- ① D.I.C. PIPE (PLAIN ENDS)
- ② FLANGE ADAPTER
- ③ GATE VALVE (FLANGED) COMPLETE WITH OPERATING WHEEL
- ④ SPACER (FLANGED END x GROOVED END) - 300mm LONG
- ⑤ GROOVED COUPLING - VICTAULIC TYPE 31 OR APPROVED EQUAL
- ⑥ SPACER (PLAIN END x GROOVED END) - CUT TO SUIT (600mm LONG)
- ⑦ CHECK VALVE (FLANGED) COMPLETE WITH MANUAL BACKFLOW ACTUATOR AND MECHANICAL INDICATOR
- ⑧ 20mm MAINSTOP (A.W.W.A. x F.I.P.) COMPLETE WITH LIQUID FILLED PRESSURE GAUGE WITH P.S.I. RANGE OF 0-160
- ⑨ FLANGED SPOOL PIECE - 150mm LONG

GENERAL NOTES:

1. VALVE CHAMBER TO MEET A.S.T.M. SPECIFICATION C-478, CSA A23.4-94 (OR LATEST REVISIONS)
2. FRAME TO BE ANCHORED WITH CEMENT MORTAR.
3. ALL JOINTS TO BE MADE WATERTIGHT WITH OUTSIDE PARGING AND ASPHALT WATERPROOFING
4. ALL CONCRETE SURFACES BELOW GRADE TO BE COATED WITH TWO COATS OF ASPHALT WATERPROOFING OR EQUIVALENT
5. PRECAST JOINTS SHALL BE SEALED WITH A RUBBER GASKET. OR BUTYL MASTIC SEALANT
6. A MINIMUM OF 1 ROW AND A MAXIMUM OF 400mm OF ADJUSTMENT UNITS, MANHOLE TYPE, SHALL BE USED IN ADJUSTING MANHOLE TO GRADE. AN EXTRA ALUMINUM MANHOLE SAFETY STEP, CAST INTO ADJUSTMENT UNIT, SHALL BE USED WHERE MORE THAN 300MM OF ADJUSTMENT UNITS ARE USED.
7. REFER TO WATERWORKS MATERIAL SPECIFICATIONS
8. HIGH DENSITY, EXTRUDED POLYSTYRENE FOAM, HI35 OR APPROVED EQUIVALENT, SHALL BE USED. ALL INSULATING MATERIAL MUST BE INSTALLED TO MANUFACTURER'S SPECIFICATIONS. UNLESS OTHERWISE APPROVED BY THE ENGINEER, INSULATION SHALL BE A MINIMUM OF 50mm THICK.
9. ALL PIPING IN CHAMBER TO BE THE SAME SIZE.
10. ALL PIPING THROUGH CHAMBER TO BE DUCTILE IRON CEMENT LINED



ALT.	VALVE SIZE	CHAMBER SIZE (DIA.)
1	150mm	1800mm
2	200mm - 300mm	2400mm
3	LARGER THAN 300mm	CAST IN PLACE